

# How Industry Puts Cletracs to Work!

Highway construction and maintenance  
 Street repair and municipal projects  
 Airport building and maintenance  
 Snow removal from roads, streets, sidewalks  
 Real estate and subdivision development  
 Land clearing, grading, dragging  
 Excavating and earthmoving  
 Bull-dozing, ditch digging, back-filling  
 Laying pipe, erecting poles, stringing lines  
 Loading, unloading and spotting freight cars  
 Hauling materials in and around factories  
 Logging work—snaking, hauling, loading  
 "Pulling" casing and rods, trench work,  
 hoisting and moving equipment in the  
 oil fields  
 Stripping, loading and hauling at mines and  
 quarries  
 Operating hoists and conveyors at wharves  
 Golf course building and maintenance

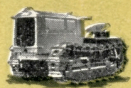
These are but a few of the many uses which Cletracs are serving. Wherever there is work demanding sure-footed, abundant, low-cost power, you will find one of the five famous Cletrac Crawlers, shown below, to perfectly match your requirements.

# Cletrac

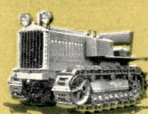
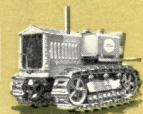
# 300



20

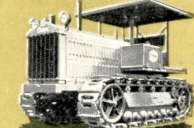
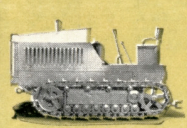


30

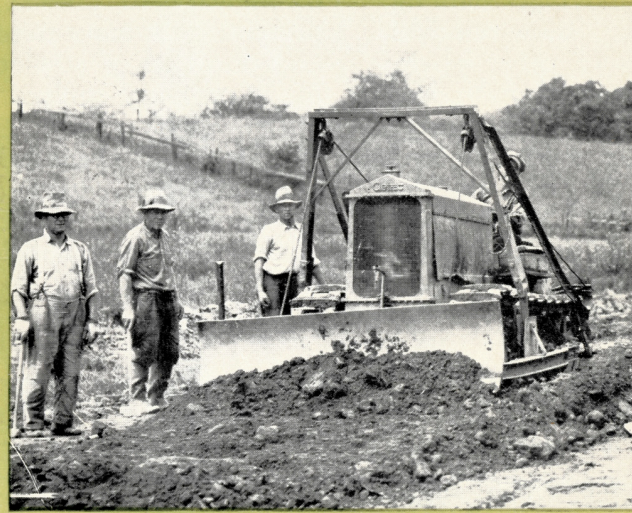


40

80-60



100



C  
L  
E  
T  
R  
A  
C

# Offering an Economical Advancement in Power Beyond the Limitations of Smaller Tractors!

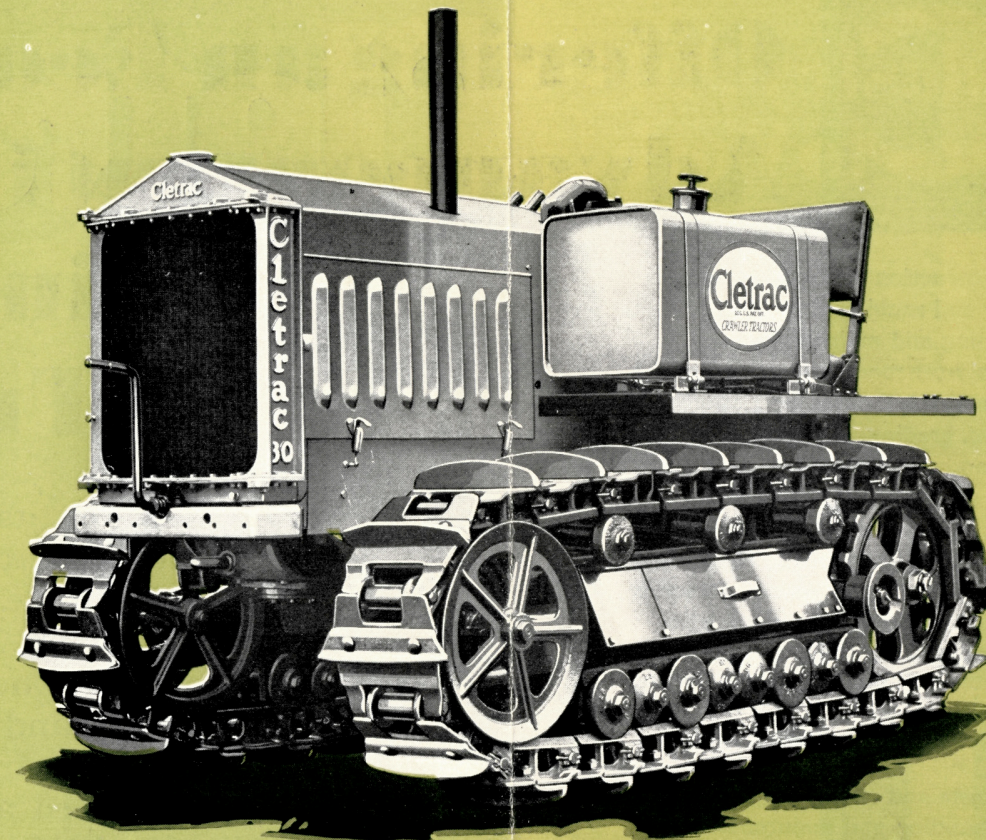
**G**REATER tractor power, with its capacity for larger loads, is frequently not only desirable from the standpoint of economy, but often becomes absolutely essential by reason of the work to be done. The rugged *Cletrac* "30" takes this economical step beyond low-powered tractors and opens up a highly profitable and more extensive field of operation. Bigger loads, fewer trips, more ground covered per hour—these are part of the speed and economy developed when a *Cletrac* "30" takes hold of a job.

Here is a tractor of proved ability and capacity, ideal for road construction, earth moving, hauling, grading, bull-dozing, snow-removal, logging and scores of other operations where a full thirty horse-power delivery affords a distinct advantage. In keeping with the rigid standards of *Cletrac* quality in both material and workmanship the *Cletrac* "30" offers exceptional value in the field of truly high-grade tractors. Care-

fully designed, built of tested metals of finest quality and conforming throughout to proved engineering principles, it assures a performance and duration of service beyond the life of ordinary equipment.

If your power needs call for dependable, low-cost, thirty horse-power performance you will find complete satisfaction in your selection of the *Cletrac* "30."

**THE CLEVELAND TRACTOR COMPANY  
CLEVELAND, OHIO**



## SPECIFICATIONS

**MOTOR**—Six cylinder, four cycle, water-cooled, valve-in-head, cylinders cast en bloc, 3¾ inch bore by 5 inch stroke.

**MOTOR LUBRICATION**—Force feed lubrication to the crank shaft, connecting rods and valve rocker shaft. Splash lubrication to the cam shaft, cylinder walls, pistons, rings and wrist pins. A double oil pump of gear type is located in the oil sump at the rear end of the motor. This double pump insures lubrication on extreme grades.

**IGNITION**—Eisemann high-tension magneto with impulse starter. Delco-Remy starting and lighting system and Willard battery are optional equipment.

**GOVERNOR**—Fly ball governor to butterfly valve above carburetor.

**CARBURETOR AND FUEL SYSTEM**—Schebler centralized float carburetor. A C Fuel pump is used in conjunction which insures fuel on any grades up to 60%. The fuel tank capacity is 30 gallons.

**CLARIFIER**—All air entering the carburetor is cleaned by the Pomona Clarifier.

**OIL FILTER**—All motor oil is filtered through the Purolator.

**CLUTCH**—Borg and Beck, of push type design, single plate, 12 inch diameter.

**TRANSMISSION AND SPEEDS**—Selective type. Three speeds forward and one reverse. Low speed is 2.1 miles per hour. Intermediate speed is 3.2 miles per hour. High speed is 4.1 miles per hour. Reverse speed is 2.6 miles per hour. All ratings given are at a governed engine speed of 1700 RPM. Ball bearings are used

throughout and lubrication is by a bath of oil, supplied by a gear-driven pump through a filter.

**STEERING**—Steering is accomplished by the effect of the motor through a planetary compensating differential. As pressure is applied to either side of the steering brake drums by the steering levers, it slows down the track on the side to which the pressure is applied, causing the opposite track to speed up.

**DRIVE SPROCKET WHEELS**—The drive sprocket wheels are of cast steel, heat-treated, supported on extra large shafts mounted in heavy-duty ball bearings.

**TRACKS AND TRACTIVE SURFACE**—The track shoes are 12 inches wide, 9½ inch pitch. Grouters are 2½ inches high and 15¼ inches wide. There are 22 heat-treated, carbon steel shoes in each track. Track shoe pins are 1½ inch diameter, of special chrome manganese steel. The bushings and rollers are of the same steel, heat-treated. Length on the ground for each track is 67 inches. The total tractive surface is 1,608 inches.

**GENERAL DIMENSIONS**—Length over all, 104 inches. Width over all, 65 inches. Height at radiator cap, 57 inches. Center to center of tracks, 44 inches. Clearance at drawbar, 8½ inches, without grouters.

**TURNING RADIUS**—Turning radius is 10 feet.

**RATINGS**—At the draw bar, 30 horse power. At the power pulley, 45 horse power.

**POWER PULLEY AND TAKE-OFF—EXTRA EQUIPMENT**—Attachment furnished with or without belt pulley. Pulley is of 15 inch diameter, 8½ inch face. Operates at 745 RPM at a belt speed of 2900 feet per minute and motor speed of 1700 RPM. Power take-off shaft operates at 745 RPM.

T  
H  
I  
R  
T  
Y